



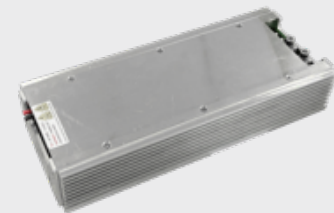
Description

Powerland's 2500W isolated bi-directional DCDC converter allows bi-directional power transfer between 300-450Vdc high voltage (HV) and 28-58.4Vdc low voltage (LV). The converter supports current control and can switch between boost and buck operating states via CAN communication..

Fan Cooling Version



Natural Cooling Version



Applications

- Energy storage system

Features

- Current/Voltage Mode Isolated Bidirectional DC/DC
- - HV → LV output power: 2500W (buck conversion)
- Efficiency: up to 97%, with no less than 90% efficiency over the full voltage range
- CAN bus based condition monitoring and protection
- High voltage range: 300 ~ 450 Vdc, low voltage range: 28 ~ 58.4 Vdc
- - HV ← LV output power: 2500W (step-up conversion)
- -40 ~ 60° C Operating temperature

Specifications

Model	PLD2500-BDGA400-48
Power Direction	Bi-directional
HV Voltage	30~86V
HV Max Current	6.6A
HV Max Output Power	2500W
LV Voltage	28~58V
LV Max Current	50A
LV Max Output Power	2500W
Full-load Efficiency	97.5%
Communication	CAN
Protection	HV/LV overvoltage, HV/LV undervoltage, HV/LV overcurrent & current limiting, short-circuit protection, Temperature derating & OTP
Housing operating temperature	-40~75°C
No derating working ring temperature	-40~45°C
Cooling	Fan cooling/Natural cooling
Dimensions(L*W*H)	Fan cooling:314x82x65mm Natural cooling:314x90x50mm
Weight	2kg