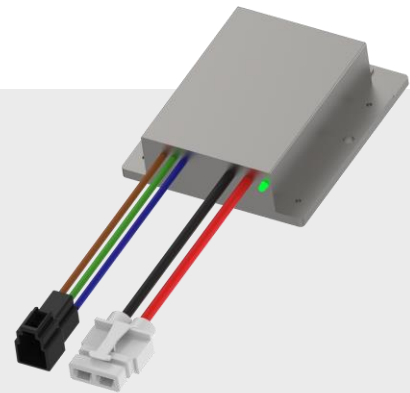




Description

Powerland's "Neon" series 200W non-isolated DC/DC is designed with small size, high efficiency and high reliability, which draws power from a bank of batteries suitable for ABS systems on e-motorcycle. It saves about 90% space compared with the traditional lead-acid battery system solution, and reduces the weight and increases the storage space, so that the helmet can be put in the seat bucket.



Applications

- ABS system on e-motorcycle
- 12V/24V output converter on e-vehicle

Features

- Compact Size: 100x90x27mm
- High Efficiency
- All-round Protections: Input UVP&OVP; Output OVP,OCP,OTP,OSP
- Non-isolated Input / Output Design
- Operation Temperature: -20~60°C
- On/Off Control
- IP65 Ingress Grade

Specifications

Model	PLD200-DAL014-13
Output Voltage	13.8V
Output Current	0~14A
Output Power	200W
Input Voltage	40~90V
Max. Input Current	17A
Efficiency	89.5%
Protections	Input UVP&OVP; Output OVP, OCP, OTP, OSP
Ingress Grade	IP65
Operation Temperature	-20~60°C
Cooling	Natural Cooling
Max. Case Temperature	95°C
Isolation Voltage	Input to Case: 500Vdc
Dimensions (LxWxH)	100*90*27mm
Weight	0.45kg